

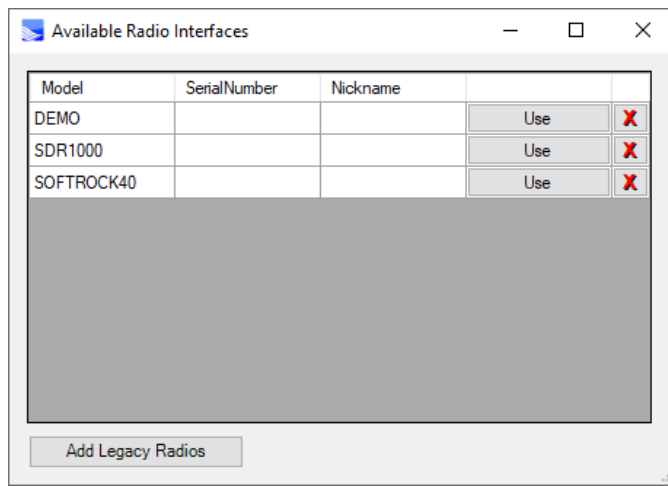
Controlling Multiple Radios and/or Multiple Networked Pi SDR IQ Plus

For having multiple PowerSDR controlled rigs, we have to configure additional lines in the Available Radio Interfaces table that pops up first when powerSDR is executed. Also we have to configure each one of those to be connected with a specific Pi SDR IQ Plus device.

Each line in this table is a complete settings container, for every rig/line included here, settings are preserved amongst upgrades and also are separate from one to another.

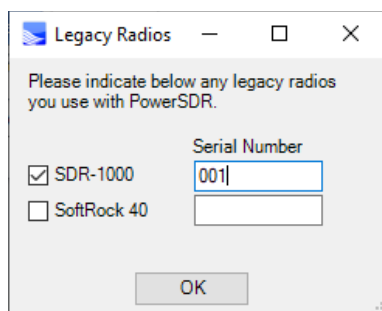
In order to have two concurrently operated rigs with Pi SDR IQ Plus, we have to follow the following steps.

At first, from the initial installation (if we have performed one) this table will be shown after PowerSDR execution

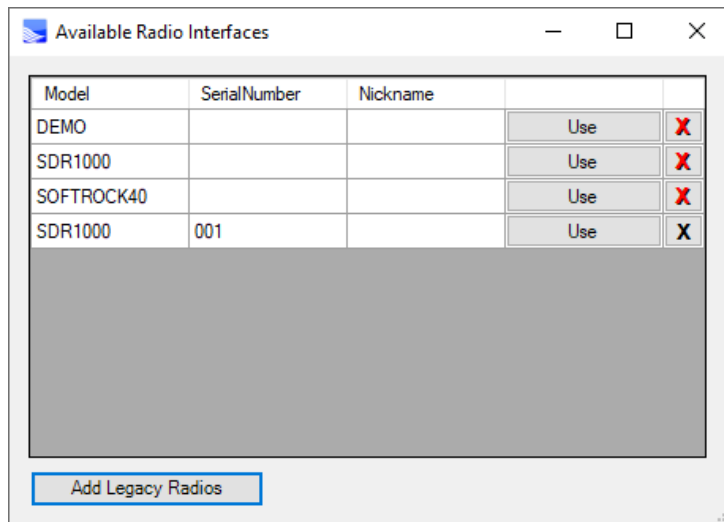


We need to add two lines on the table, whereas each will be destined to contain the settings of each of the concurrently used rigs.

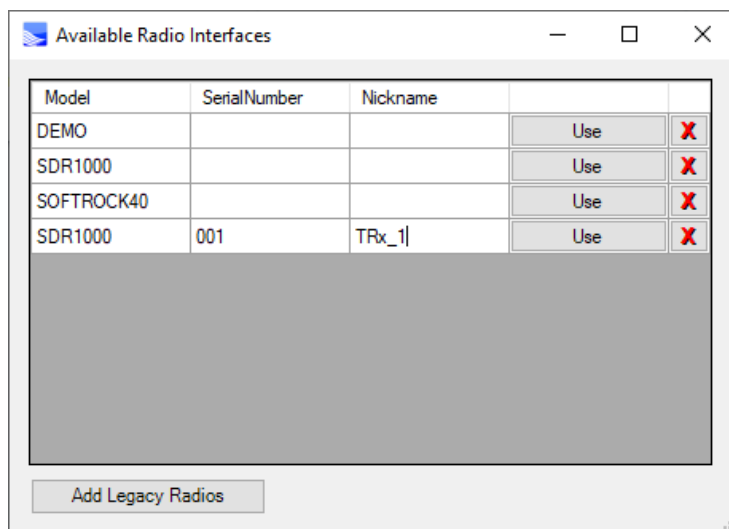
We click on the Add Legacy Radios button then checking the SDR-1000 checkbox and typing a unique number eg 001



Then by clicking ok we have

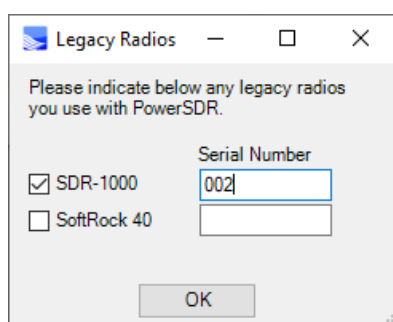


Here we can add a nickname to our radio, it will be shown on PowerSDR title later on as an indication/reminder of which rig we use, lets type TRx_1 there

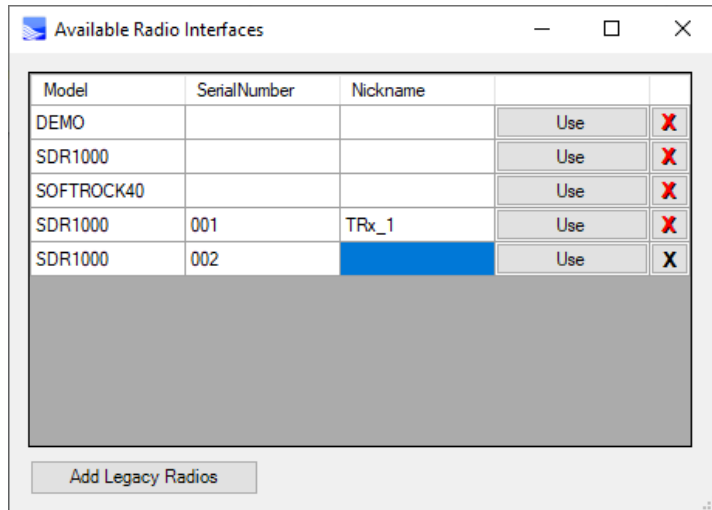


We do not yet select by clicking any Use button.

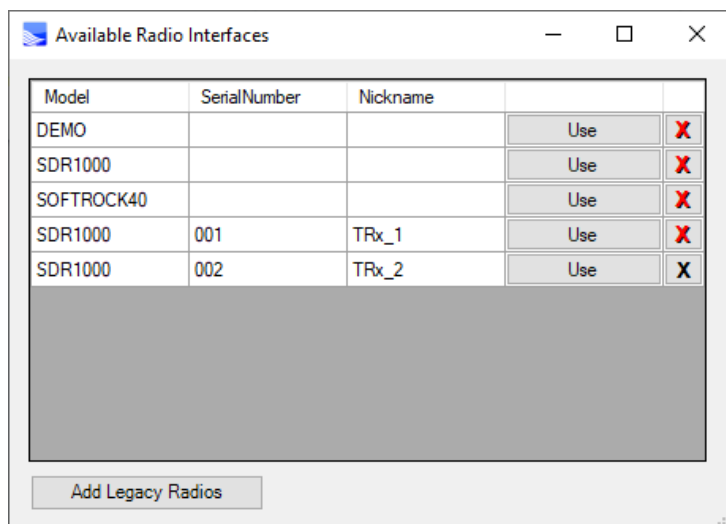
Next, click again Add Legacy Radios button then checking the SDR-1000 checkbox and typing another unique number eg 002



Then by clicking ok we have

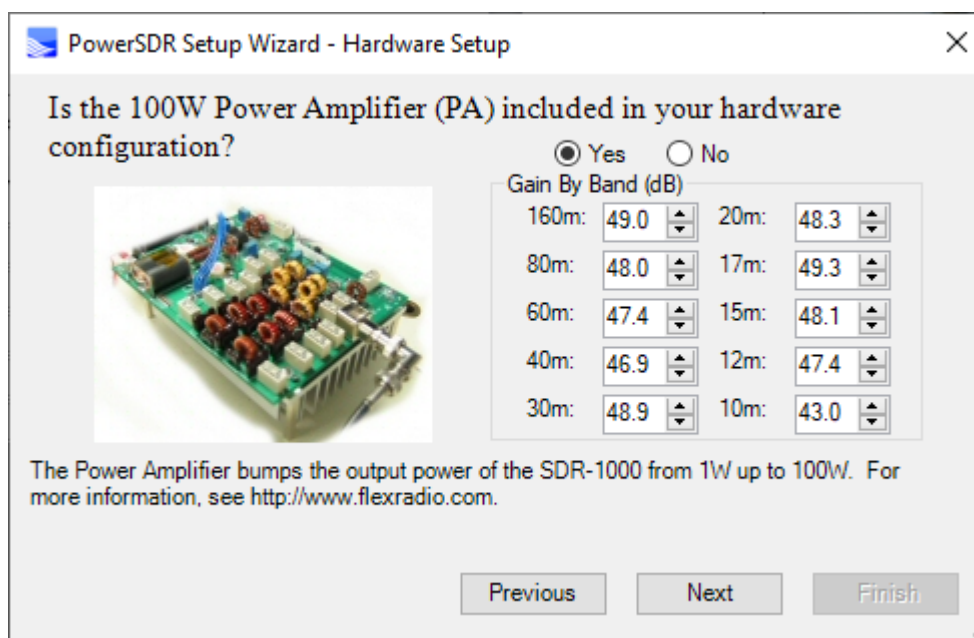
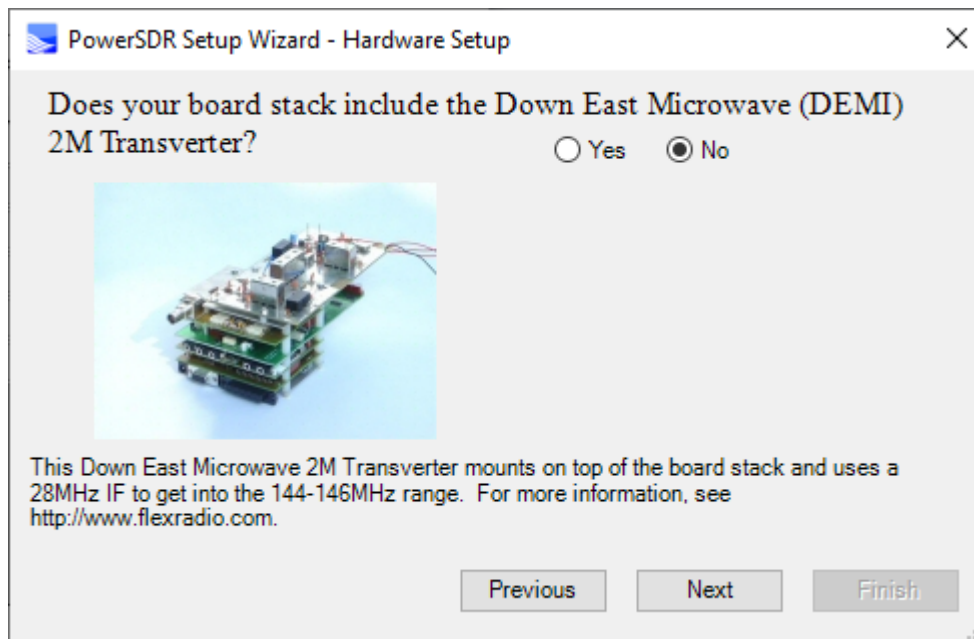


Here we can add again a nickname to our radio, (it will be shown on PowerSDR title later on as an indication/reminder of which rig we use) so lets type TRx_2 there



And this will be the selection table where our two rigs could be selected upon start of PowerSDR by clicking the appropriate 'Use' button.

For each one of the lines in the Available Radio Interfaces table, when it is selected by clicking 'Use' button for the first time (a one-time configuration), the following settings need to be specified



PowerSDR Setup Wizard - Hardware Setup

Is the LDG Z-100 Antenna Tuning Unit (ATU) included in your hardware configuration?

Yes No



The integrated ATU allows the user to tune coax antennas with an SWR of up to 10:1. For more information, see <http://www.flexradio.com>.

Previous Next Finish

PowerSDR Setup Wizard - Hardware Setup

Does your hardware configuration include the External Clock Reference Option?

Yes No



The External Clock Reference Option allows the DDS to be synchronized with a more stable clock source. For more information, see <http://www.flexradio.com>.

Previous Next Finish

PowerSDR Setup Wizard - Hardware Setup

Is the USB to Parallel adapter included in your hardware configuration?

Yes No



The USB to Parallel adapter eliminates the need for a parallel port interface on your computer. Unlike other off-the-shelf adapters, the FlexRadio Systems adapter implements all the data, status, and control lines for complete integration with existing parallel port hardware. For more information, see <http://www.flexradio.com>.

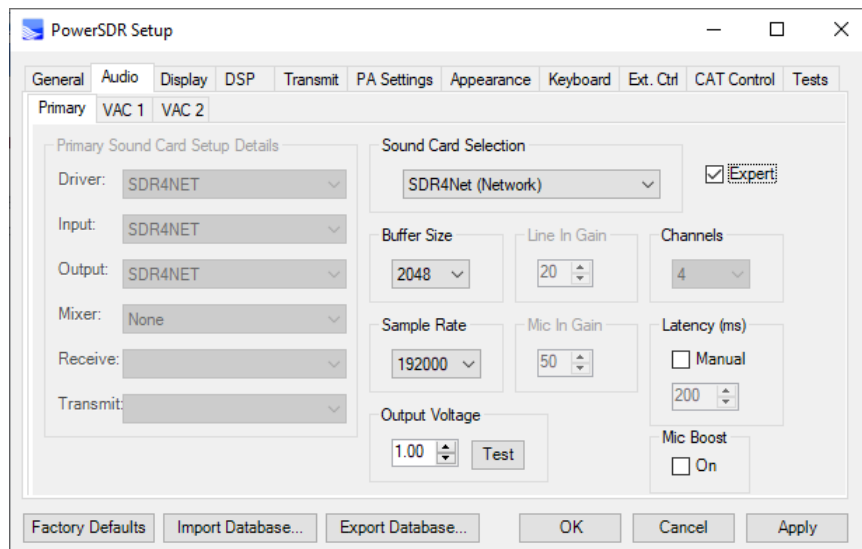
Previous Next Finish



After the first time config, user has to go to

->Setup->Audio->Primary

And set the settings according to this

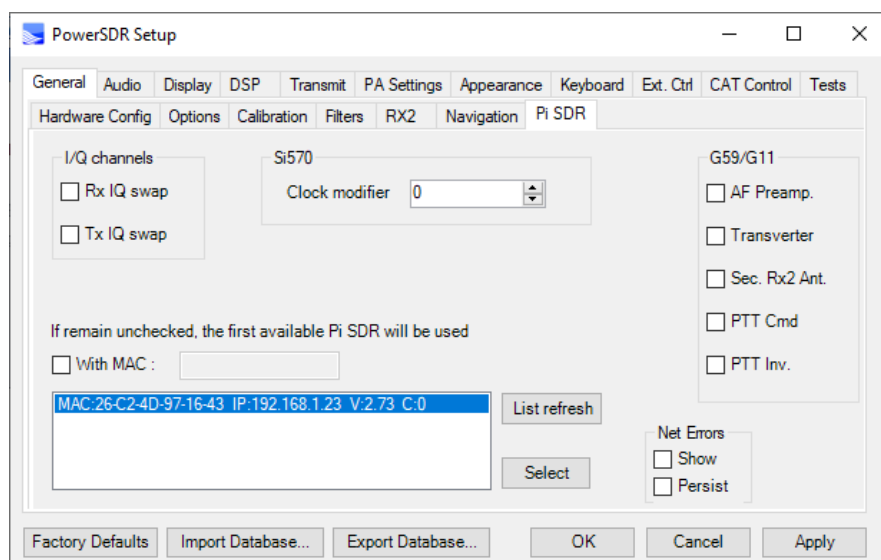


For assigning a specific Pi SDR IQ Plus to a rig configuration in the Available Radio Interfaces table, we have to first select the specific configuration from the Use button and then when PowerSDR starts, to go to

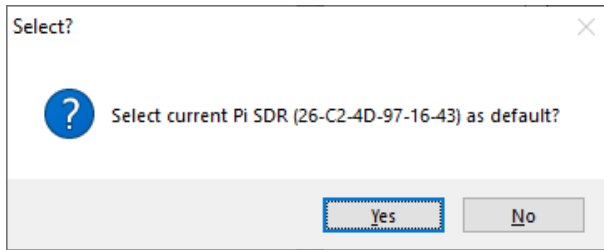
->Setup->General->Pi SDR

At this stage all cablings are supposed that are in place and we have powered up ONLY the Pi SDR IQ Plus that we want to assign and PowerSDR START button is NOT clicked.

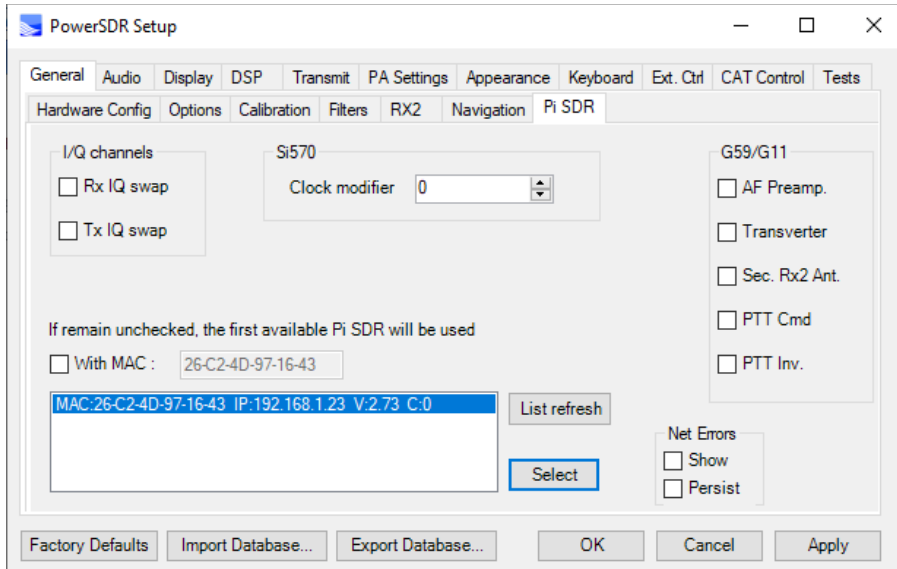
There we have to click on the List Refresh button and wait 10secs to search



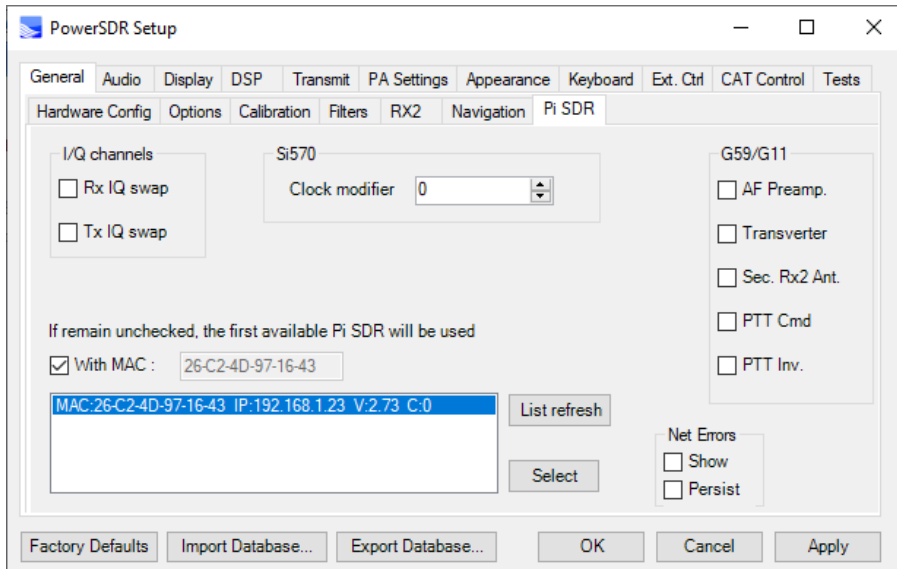
We click on the line shown as “MAC:..” and then click on “Select” button, a confirmation message appears

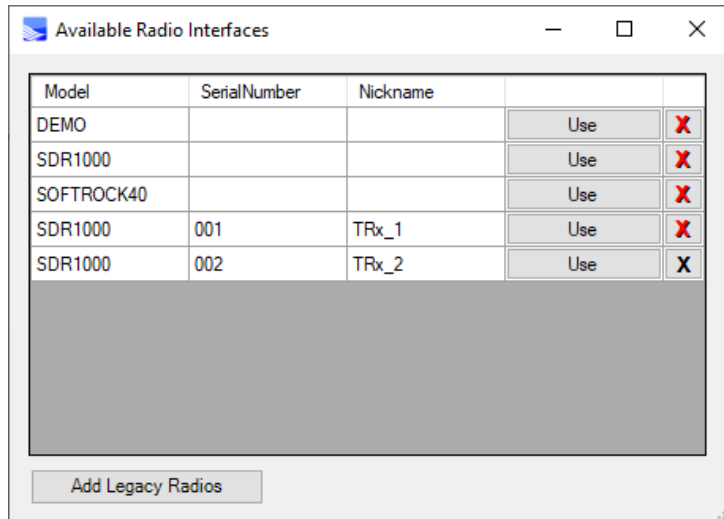


We click Yes and the MAC address is placed aside the “With MAC:” checkbox



We have to check the “With MAC:” checkbox and from now on this configuration is tied together with the specific Pi SDR IQ Plus.





In this way, not only different hardware rigs can be separately configured, but also different setups of the same hardware rig is possible, eg to have a line for daily phone/SSB usage and a line with specific settings ready for digimodes, its up to you.